



TORNOMEC
ACESSÓRIOS PARA FERRAGISTA E USINAGEM

CATÁLOGO DE PRODUTOS

ARTICULADOR



PÇS / KG	CÓD.	EMB.
28	193	1 kg

BATENTE P/ PORTA DE AÇO



CÓDIGO	EMBALAGEM
186	5 pçs

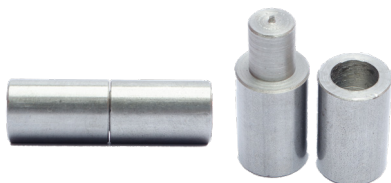
CAIXA C/ MOLA P/ PORTA DE AÇO



TAMANHO:
1,25X50 M

MED.	CÓD. POLIDA	CÓD. ZINCADA	EMB.
3 m	3890	4091	1 pç
3,5 m	3891	4092	1 pç
4 m	3892	4093	1 pç
4,5 m	3893	4094	1 pç
5 m	3894	4095	1 pç
5,5 m	3895	4096	1 pç
6 m	3896	4097	1 pç
Caixa Vazia	3800	-	1 pç

CACHIMBO



MED.	CÓD.	EMB.
3/8" x 35 mm	130	25 pçs
1/2" x 45 mm	131	10 pçs
5/8" x 55 mm	132	10 pçs
3/4" x 60 mm	133	10 pçs
7/8" x 70 mm	134	10 pçs
1" x 80 mm	135	10 pçs
1.1/4"x90 mm	136	10 pçs

CACHIMBO C/ FURO DE LUBRIFICAÇÃO



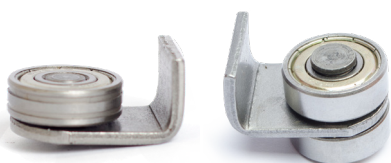
MED.	CÓD.	EMB.
3/8" x 35 mm	644	25 pçs
1/2" x 45 mm	518	10 pçs
5/8" x 55 mm	296	10 pçs
3/4" x 60 mm	442	10 pçs
7/8" x 70 mm	297	10 pçs
1" x 80 mm	298	10 pçs
1.1/4" x 90 mm	299	10 pçs

CACHIMBO PASSANTE



MED.	CÓD. U2R	EMB.
3/8"x 55	6762	10 pçs
1/2"x 60	6765	10 pçs
5/8"x60	6768	10 pçs
3/4"x68	6663	10 pçs
7/8"x75	6791	10 pçs
1" x 75	6794	10 pçs
1.1/4"x80	6797	10 pçs

CARRETEL



MED.	CÓD.	EMB.
7/8" Simples - SKP	2478	10 pçs
7/8" Duplo - SKSP	2437	10 pçs
1" Simples - SKP	9113	10 pçs
1" Duplo - SKSP	8313	10 pçs

CARRETEL RETO



MED.	CÓD.	EMB.
Ø32 Simples	9059	10 pçs
Ø40 Simples	12616	10 pçs

EIXO P/ PORTÃO BASCULÁVEL NYLON



MED.	CÓD.	EMB.
Ø42X80 N	1546	2 pçs
Ø44X80 N	1547	2 pçs
Ø47X80 N	1548	2 pçs
Ø68X118 N	4476	2 pçs

EIXO P/ PORTÃO BASCULÁVEL



MED.	CÓD.	EMB.
Ø42X80	212	2 pçs
Ø44X80	207	2 pçs
Ø47X80	142	2 pçs
Ø68X118	4240	2 pçs

EIXO P/ PORTÃO BASCULÁVEL C/ CANAL NO EIXO



MED.	CÓD.	EMB.
Ø44x80	3257	2 pçs
Ø68x100	4239	2 pçs

EIXO P/ PORTÃO BASCULÁVEL C/ ESP. Z



MED.	CÓD.	EMB.
Ø48X103	208	2 pçs

GONZO C/ CHUMBADOR



MED.	CÓD.	EMB.
3/8" x 1/2" C	124	1 dz
1/2" x 5/8" C	125	1 dz
5/8" x 3/4" C	126	1 dz
7/8" x 1" C	127	1 dz
7/8" x 1.1/4" C	128	1 dz
7/8" x 1.1/2" C	129	1 dz
7/8 x 2" C	7670	1 dz

GONZO P/ PARAFUSAR



MED.	CÓD.	EMB.
3/8" x 1/2"	9138	1 dz
1/2" x 5/8"	9083	1 dz
5/8" x 3/4"	9082	1 dz
7/8" x 1"	9139	1 dz
7/8" x 1.1/4"	9140	1 dz
7/8" x 1.1/2"	9141	1 dz
7/8 x 2"	9142	1 dz

GONZO SIMPLES



MED.	CÓD.	EMB.
3/8" x 1/2"	118	1 dz
1/2" x 5/8"	119	1 dz
5/8" x 3/4"	120	1 dz
3/4" x 1"	8893	1 dz
7/8" x 1"	121	1 dz
7/8" x 1.1/4"	122	1 dz
7/8" x 1.1/2"	123	1 dz
7/8" x 2"	211	1 dz

GONZO SIMPLES C/ ABA SOLTA



MED.	CÓD.	EMB.
3/8" x 1/2"	8684	1 dz
1/2" x 5/8"	8685	1 dz
5/8" x 3/4"	8686	1 dz
7/8" x 1"	8687	1 dz
7/8" x 1.1/4"	8688	1 dz
7/8" x 1.1/2"	8689	1 dz
7/8 x 2"	8690	1 dz

KIT BÁSICO P/ PORTÃO BASCULANTE C/ ROLDANA P/ CABO 1/4" EIXO FURADO GUIA C/ ROSCA



MED.	cód. GUIA Ø44	cód. GUIA Ø68
2" 1R		
2.1/2" 1R	12520	
3" 1R	10768	
3.1/2" 1R		
4" 1R	10185	12914
5" 1R	10832	
6" 1R		

KIT BÁSICO P/ PORTÃO BASCULANTE C/ ROLDANA P/ CABO 1/4" EIXO MACIÇO GUIA C/ ROSCA



MED.	cód. GUIA Ø44	cód. GUIA Ø68
2" 1R		
2.1/2" 1R		
3" 1R	9907	
3.1/2" 1R		
4" 1R	9908	
5" 1R		
6" 1R		

LABIRINTO ESPECIAL (C)



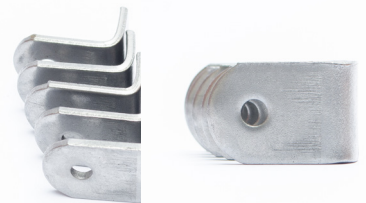
MED.	CÓD.	EMB.
Ø 2"	445	1 cj
Ø 2.1/2"	2965	1 cj
Ø 3"	3421	1 cj
Ø 3.1/2"	5271	1 cj
Ø 4"	3846	1 cj

LABIRINTO (C)



MED.	CÓD.	EMB.
Ø 2"	137	1 cj
Ø 2.1/2"	138	1 cj
Ø 3"	139	1 cj
Ø 3.1/2"	140	1 cj
Ø 4"	141	1 cj

ORELHINHA



MED.	CÓD.	EMB.
Furo Ø 3/16" - 51 pçs / kg	192	1 Kg
Furo Ø 1/4" - 58 pçs / kg	574	1 Kg
Furo Ø 5/16" - 61 pçs / kg	1638	1 Kg

PINO PANTOGRÁFICO



MED.	CÓD.	EMB.
25 mm	1361	100 pçs
28 mm	1734	100 pçs
30 mm	3585	100 pçs

PONTA DE LANÇA



ESPADA

MED.	CÓD.	EMB.
Pequena 22 pçs / kg	3,5 x 76	189
Grande 15 pçs / kg	4 x 95	190

Tam. Único
25 pçs / kg

FLOR DE LIS

MED.	CÓD.	EMB.
2,7x97	191	5 Kg

REBITE DE FERRO - CABEÇA CHATA



MED.	CÓD.	EMB.
3/16" x 1" Polido	8947	1 kg
3/16" x 1" Zincado	5520	1 kg
3/16" x 1/2" Polido	8945	1 kg
3/16" x 1/2" Zincado	8936	1 kg
3/16" x 3/4" Polido	8946	1 kg
3/16" x 3/4" Zincado	6723	1 kg
3/16" x 7/8" Polido	2438	1 kg
3/16" x 7/8" Zincado	8939	1 kg
3/16" x 5/8" Polido	9036	1 kg

REBITE TANOEIRO ZINCADO Nº8

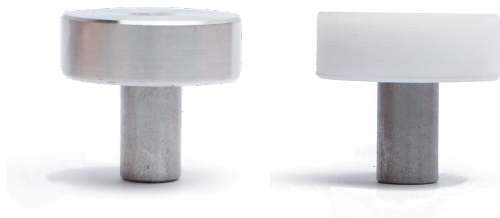

MED.	CÓD.	EMB.
1/8 X 1/4" Aço	11363	1 Kg

RODÍZIO DE NYLON

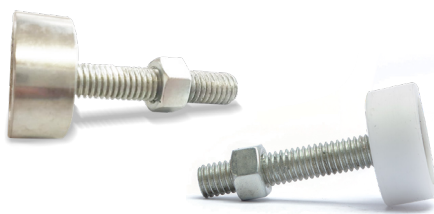

MED.	CÓD.	EMB.
Ø1.3/16" NSKP - Pino 3/16"	8705	50 pçs
Ø1.3/16" NSKP - Furo 3/16"	8706	50 pçs

RODÍZIO C/ FURO OU PINO


MED.	CÓD.	EMB.
Ø7/8" SKP - Pino 3/16"	166	100 pçs
Ø7/8" SKP - Pino 1/4"	2558	100 pçs
Ø1" SKP - Pino 3/16"	174	50 pçs
Ø1" SKP - Pino 1/4"	2561	50 pçs
Ø40" SKP - Pino 1/4"	9055	10 pçs
Ø1.1/4" SKP - Pino 1/4"	7665	10 pçs
Ø7/8" SKSP - Furo 3/16"	167	100 pçs
Ø7/8" SKSP - Furo 1/4"	2440	100 pçs
Ø1" SKSP - Furo 3/16"	175	50 pçs
Ø1" SKSP - Furo 1/4"	2691	50 pçs
Ø1.1/4" SKSP - Furo 1/4"	4975	10 pçs
Ø40" SKSP - Furo 1/4"	9143	10 pçs

ROLAMENTO P/ TRILHO - AÇO OU NYLON


Aço			Nylon		
MED.	CÓD.	EMB.	MED.	CÓD.	EMB.
Ø7/8"x20	144	10 pçs	Ø35x25 N	434	10 pçs
Ø35x25	149	10 pçs	Ø40x25 N	154	10 pçs
Ø40x25	150	10 pçs	Ø42x25 N	155	10 pçs
Ø42x25	151	10 pçs	Ø44x25 N	156	10 pçs
Ø44x25	152	10 pçs	Ø68x25 N	4551	2 pçs
Ø68x25	813	2 pçs			
Ø70x45	153	2 pçs			

ROLAMENTO P/ TRILHO C/ ROSCA ZINCADO AÇO OU NYLON


Aço zincado			Nylon Zincado		
MED.	CÓD.	EMB.	MED.	CÓD.	EMB.
Ø42X80	3718	10 pçs	Ø42X80	3698	10 pçs
Ø44X80	8496	10 pçs	Ø44X80	4284	10 pçs
Ø44X70	11468	10 pçs	Ø44X70	9437	10 pçs

ROLAMENTO P/ TRILHO C/ CHAPA AÇO OU NYLON


Aço			Nylon		
MED.	CÓD.	EMB.	MED.	CÓD.	EMB.
Ø24x50			Ø24x50	12899	
Ø42x70			Ø42x70	12542	
Ø44x70	12517		Ø44x70	12649	

ROLAMENTO P/TRILHO C/ROSCA NYLON


MED.	CÓD.	EMB.
Ø1.3/16"X25 N	8786	50 pçs

ROLAMENTO P/ TRILHO ZINCADO AÇO OU NYLON


Aço			Nylon		
MED.	CÓD.	EMB.	MED.	CÓD.	EMB.
24mm	2534	10 pçs	24mm	2553	10 pçs
25mm	2535	10 pçs	25mm	2554	10 pçs
26mm	2536	10 pçs	26mm	2555	10 pçs
41mm	1339	10 pçs	41mm	1342	10 pçs
48mm	1340	10 pçs	43mm	9709	10 pçs
63mm	1341	10 pçs	48mm	1343	10 pçs
			63mm	1344	10 pçs

ROLDANA P/ CABO DE AÇO 1/4" C/ 1 OU 2 ROLAMENTOS – EIXO FURADO


MED.	cód. 1R EF	EMB.	cód. 2R EF	EMB.
1.1/2"	3039	10 pçs		10 pçs
2"	3040	10 pçs	3045	10 pçs
2.1/2"	3041	4 pçs	3046	4 pçs
3"	4908	4 pçs	2675	4 pçs
3 1/2"	3043	2 pçs	3047	2 pçs
4"	4917	2 pçs	3048	2 pçs
5"	2335	1 pç		1 pç
6"	5253	1 pç		1 pç

ROLDANA P/ CABO DE AÇO 1/4"
C/ 1 OU 2 ROLAMENTOS – EIXO MACIÇO



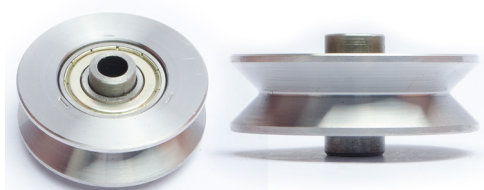
MED.	cód. 1R EM	EMB.	cód. 2R EM	EMB.
1.1/2"	0044	10 pçs	0052	10 pçs
2"	0045	10 pçs	0053	10 pçs
2.1/2"	0046	4 pçs	0054	4 pçs
3"	0047	4 pçs	0055	4 pçs
3.1/2"	0048	3 pçs	0056	2 pçs
4"	0049	2 pçs	0057	2 pçs
5"	0050	1 pç	0058	1 pç
6"	0051	1 pç	0059	1 pç

ROLDANA P/ CABO DE AÇO 1/4"
C/ 1 OU 2 ROLAMENTOS C/ PARAFUSO E PORCA



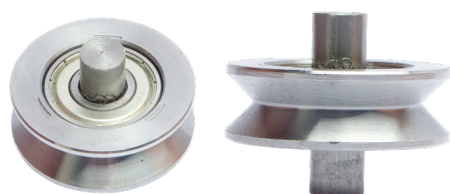
MED.	cód. 1R	EMB.	cód. 2R	EMB.
1.1/2"				
2"	13042			
2.1/2"				
3"	6577			
3.1/2"				
4"	6579			
5"	6580			
6"				

ROLDANA P/ CANTONEIRA
C/ 1 E 2 ROLAMENTOS – EIXO FURADO



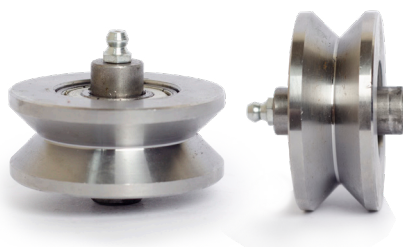
MED.	cód. VR	EMB.	cód. V2R	EMB.
1.1/2"	396	10 pçs	2376	10 pçs
2"	4215	10 pçs	2377	10 pçs
2.1/2"	4199	4 pçs	4906	4 pçs
3"	4370	4 pçs	4488	4 pçs
3.1/2"	4916	2 pçs	4915	2 pçs
4"	2373	2 pçs	4919	2 pçs
5"	2374	1 pç	2382	1 pç
6"	2375	1 pç	2383	1 pç

ROLDANA P/ CANTONEIRA
C/ 1 E 2 ROLAMENTOS – EIXO MACIÇO



MED.	cód. VR	EMB.	cód. V2R	EMB.
1"	001	10 pçs		
1.1/4"	002	10 pçs		
1.1/2"	003	10 pçs	011	10 pçs
2"	004	10 pçs	012	10 pçs
2.1/2"	005	5 pçs	013	4 pçs
3"	006	4 pçs	014	4 pçs
3.1/2"	007	3 pçs	015	2 pçs
4"	008	2 pçs	016	2 pçs
5"	009	1 pç	017	1 pç
6"	010	1 pç	018	1 pç

ROLDANA P/ CANTONEIRA
C/ PINO DE LUBRIFICAÇÃO C/ 2 ROLAMENTOS



MED.	cód. V2R	EMB.
2.1/2"	2556	4 pçs
3"	356	4 pçs
3.1/2"	477	2 pçs
4"	1256	2 pçs

ROLDANA P/ CANTONEIRA C/ 1 E 2 ROLAMENTOS C/ PARAFUSO E PORCA



MED.	cód. VR	EMB.	cód. V2R	EMB.
1"				
1.1/4"				
1.1/2"	4127			
2"	8254		12895	
2.1/2"	4363		8886	
3"	8256		3240	
3.1/2"			12285	
4"	8257		8524	
5"				
6"	010		9735	

ROLDANA P/ TUBO
C/ 1 ROLAMENTO EIXO FURADO



MED.	cód. UR FE 1/2"	cód. UR FE 5/8"	cód. UR FE 3/4"	cód. UR FE 7/8"	cód. UR FE 1"	EMB.
1.1/2"	2384	4967				10 pçs
2"	8309	4203	525			10 pçs
2.1/2"	9153	1636	4196	4168	9891	4 pçs
3"	6611	4198	4201	4170	9892	4 pçs
3.1/2"		5209	4914	7748		2 pçs
4"		1904	2389	4020		2 pçs
5"					2390	1 pç
6"			9525		2391	1 pç

ROLDANA P/ TUBO
C/ 1 ROLAMENTO – EIXO MACIÇO



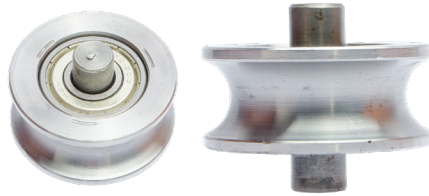
MED.	cód. UR FE 1/4"	cód. UR FE 5/16"	cód. UR FE 1/2"	cód. UR FE 5/8"	cód. UR FE 3/4"	cód. UR FE 7/8"	cód. UR FE 1"	EMB.
1"	0019							10 pçs
1.1/4"	4355	0020						10 pçs
1.1/2"			0021	0392				10 pçs
2"			6958	0022	3377	0571	4116	10 pçs
2.1/2"				0480	0023	1981	2264	4 pçs
3"				0353	0024	0449	2265	4 pçs
3.1/2"				4019	0025	4411	2266	2 pçs
4"				0668	0026	4017	2267	2 pçs
5"				4076	3797	4077	0027	1 pç
6"					9549	4031	0028	1 pç

**ROLDANA P/ TUBO
C/ 2 ROLAMENTOS EIXO FURADO**



MED.	cód. uzr FE 1/2"	cód. uzr FE 5/8"	cód. uzr FE 3/4"	cód. uzr FE 7/8"	cód. uzr FE 1"	EMB.
1.1/2"	2392					10 pçs
2"		5211	6913	10174	10079	10 pçs
2.1/2"		4631	2394	4169	1012	4 pçs
3"		400	726	4171	4209	4 pçs
3.1/2"		2951	4913	91	563	2 pçs
4"		3336	370	4597	2953	2 pçs
5"		12652	2470	1716	2398	1 pç
6"			383	3258	2399	1 pç

**ROLDANA P/ TUBO
C/ 2 ROLAMENTOS – EIXO MACIÇO**



MED.	cód. uzr FE 1/2"	cód. uzr FE 5/8"	cód. uzr FE 3/4"	cód. uzr FE 7/8"	cód. uzr FE 1"	EMB.
1.1/2"	0029	3092				10 pçs
2"	6654	0030	4082	2467	7965	10 pçs
2.1/2"		0482	0031	1108	4133	4 pçs
3"		1970	0032	1020	0923	4 pçs
3 1/2"		2952	0033	1091	0224	2 pçs
4"	4025	3280	0034	1011	4053	2 pçs
5"	4027		2471	1137	0035	1 pç
6"			2341	1888	0036	1 pç

**ROLDANA P/ TUBO C/ 1 ROLAMENTO
C/ PARAFUSO E PORCA**



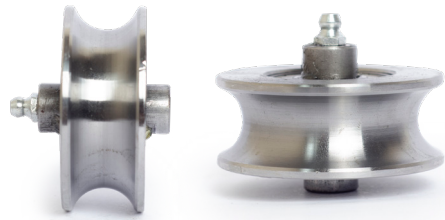
MED.	cód. ur FE 1/2"	cód. ur FE 5/8"	cód. ur FE 3/4"	EMB.
1.1/2"				10 pçs
2"		4126	8766	10 pçs
2.1/2"		12493	8416	4 pçs
3"		8372	8765	4 pçs
3 1/2"			12965	2 pçs
4"			8258	2 pçs
5"				1 pç
6"				1 pç

**ROLDANA P/ TUBO C/ 2 ROLAMENTOS
C/ PARAFUSO E PORCA**



MED.	cód. uzr FE 1/2"	cód. uzr FE 5/8"	cód. uzr FE 3/4"	EMB.
1.1/2"				10 pçs
2"		8704	12932	10 pçs
2.1/2"		12490	4318	4 pçs
3"		12608	7686	4 pçs
3 1/2"		13024	6581	2 pçs
4"		12491	6582	2 pçs
5"				1 pç
6"				1 pç

**ROLDANA P/ TUBO
C/ PINO DE LUBRIFICAÇÃO C/ 2 ROLAMENTOS**



MED.	cód. uzr	EMB.
2"	995	10 pçs
2.1/2"	1254	4 pçs
3"	996	4 pçs
3.1/2"	997	2 pçs
4"	2693	2 pçs

**ROLDANA P/ CANTONEIRA ZINCADA
C/ 1 E 2 ROLAMENTOS – EIXO FURADO**



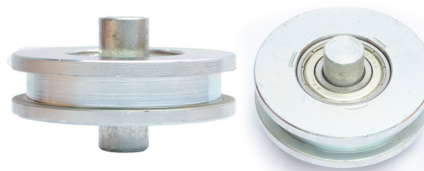
MED.	cód. VR	EMB.	cód. VR	EMB.
2"	8436	10 pçs	9746	10 pçs
2.1/2"	6315	4 pçs	10819	4 pçs
3"	8438	4 pçs	8999	4 pçs
3.1/2"	9256	2 pçs	9963	2 pçs
4"	2054	2 pçs	9245	2 pçs

**ROLDANA P/ CANTONEIRA ZINCADA
C/ 1 E 2 ROLAMENTOS – EIXO MACIÇO**



MED.	cód. VRZ	EMB.	cód. VRZ	EMB.
1.1/2"	1277	10 pçs		10 pçs
2"	4108	10 pçs	3162	10 pçs
2.1/2"	1279	4 pçs	393	4 pçs
3"	1280	4 pçs	1680	4 pçs
3.1/2"	1281	2 pçs	4061	2 pçs
4"	1282	2 pçs	8734	2 pçs
5"	1283	1 pç	11461	1 pç
6"	1284	1 pç	11463	1 pç

**ROLDANA P/ FERRO QUADRADO
C/ 1 ROLAMENTO – EIXO MACIÇO ZINCADA**



MED.	cód. uzr Q 3/8"	cód. uzr Q 1/2"	EMB.
1.1/2"	2293	1285	10 pçs
2"	2643	1286	10 pçs
2.1/2"	2238	1287	4 pçs
3"	2295	1288	4 pçs
3.1/2"	2296	1289	2 pçs
4"	2297	1290	2 pçs
5"	2298	1291	1 pç
6"	2299	1292	1 pç

**ROLDANA P/ TUBO ZINCADA
C/ 2 ROLAMENTOS – EIXO MACIÇO**



MED.	cód. uzr FE 5/8"	cód. uzr FE 3/4"	cód. uzr FE 7/8"	cód. uzr FE 1"	EMB.
2"	259	8532	2566	11129	10 pçs
2.1/2"	572	842	4147	11132	4 pçs
3"	262	1954	4148		4 pçs
3.1/2"	12665	347	4149		2 pçs
4"		355	4150	4469	2 pçs
5"			9950	1955	1 pçs
6"				6759	1 pçs

**ROLDANA P/ TUBO ZINCADA
C/1 ROLAMENTO – EIXO FURADO**



MED.	cód. ur FE 5/8"	cód. ur FE 3/4"	cód. ur FE 7/8"	EMB.
2"	8437	1084	9341	10 pçs
2.1/2"	7471	2349	9340	4 pçs
3"	8439	2350	11569	4 pçs
3.1/2"	11354	8670		2 pçs
4"	8440	10219		2 pçs
5"	11356			1 pç
6"	11357			1 pç

**ROLDANA P/ TUBO ZINCADA
C/2 ROLAMENTOS – EIXO FURADO**



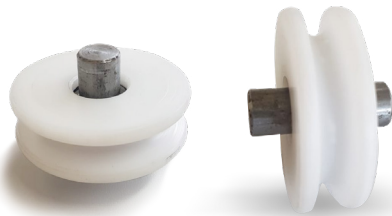
MED.	cód. ur FE 3/4"	cód. ur FE 7/8"	EMB.
2"	9338	9337	10 pçs
2.1/2"	2352		4 pçs
3"	2351		4 pçs
3.1/2"	4321	9339	2 pçs

**ROLDANA P/ TUBO ZINCADA
C/ 1 ROLAMENTO – EIXO MACIÇO**



MED.	cód. ur FE 1/2"	cód. ur FE 5/8"	cód. ur FE 3/4"	cód. ur FE 7/8"	cód. ur FE 1"	EMB.
1.1/2"	1293		3588	4066		10 pçs
2"	1294	1317	876	1324	216	10 pçs
2.1/2"	1295	1318	2280	1325	217	4 pçs
3"	1296	1319	2676	1326	218	4 pçs
3.1/2"	1297	1320	92	1327	219	2 pçs
4"	1298	1321	2281	1328	220	2 pçs
5"	1299	1322	8708	1329		1 pç
6"	1300	1323	2282	1330		1 pç

**ROLDANA P/ CABO DE AÇO NYLON
C/ 1 OU 2 ROLAMENTOS - EIXO MACIÇO**



MED.	cód. N1R EM	EMB.	cód. N2R EM	EMB.
1.1/2"	1677	10 pçs		10 pçs
2"	0495	10 pçs		10 pçs
2.1/2"	2794	4 pçs	4528	4 pçs
3"	0837	4 pçs	1360	4 pçs
3 1/2"	3753	2 pçs		2 pçs
4"	4212	2 pçs	8456	2 pçs

**ROLDANA P/ CABO DE AÇO NYLON
C/ 1 OU 2 ROLAMENTOS - EIXO FURADO**



MED.	CÓD. N1R	EMB.	CÓD. N2R	EMB.
1.1/2"		10 pçs		10 pçs
2"	801	10 pçs		10 pçs
2.1/2"	10830	4 pçs		4 pçs
3"	6681	4 pçs		4 pçs
3 1/2"	12414	2 pçs		2 pçs
4"	5828	2 pçs	8365	2 pçs

**ROLDANA P/ CABO DE AÇO 1/4" C/ 1 OU 2
ROLAMENTOS C/ PARAFUSO E PORCA NYLON**



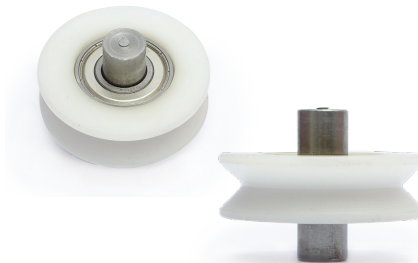
MED.	cód. N1R	EMB.	cód. N2R	EMB.
1.1/2"				
2"	12535			
2.1/2"				
3"	12837			
3 1/2"				
4"				
5"				
6"				

**ROLDANA P/ CANTONEIRA NYLON
C/ 1 E 2 ROLAMENTOS – EIXO FURADO**



MED.	cód. NV1R	EMB.	cód. NV2R	EMB.
1"				
1.1/2"	395	10 pçs		
2"	4260	10 pçs	2406	10 pçs
2.1/2"	4197	5 pçs	2407	4 pçs
3"	399	4 pçs	2408	4 pçs
3.1/2"	2402	3 pçs		2 pçs
4"	2405	2 pçs	2410	2 pçs

**ROLDANA P/ CANTONEIRA NYLON
C/ 1 E 2 ROLAMENTOS – EIXO MACIÇO**



MED.	cód. NV1R	EMB.	cód. NV2R	EMB.
1"	521			
1.1/2"	060	10 pçs		
2"	061	10 pçs	066	10 pçs
2.1/2"	062	5 pçs	067	4 pçs
3"	063	4 pçs	068	4 pçs
3.1/2"	064	3 pçs	069	2 pçs
4"	065	2 pçs	070	2 pçs

**ROLDANA P/ CANTONEIRA C/ 1 E 2
ROLAMENTOS C/ PARAFUSO E PORCA NYLON**



MED.	cód. V1R	EMB.	cód. V2R	EMB.
1"				
1.1/4"				
1.1/2"				
2"	8255		12099	
2.1/2"				
3"			8797	
3.1/2"			12098	

**ROLDANA P/ TUBO NYLON
C/ 1 ROLAMENTO – EIXO FURADO**



MED.	CÓD. NU2R FE 1/2"	CÓD. NU2R FE 5/8"	CÓD. NU2R FE 3/4"	CÓD. NU2R FE 7/8"	CÓD. NU2R FE 1"	EMB.
1.1/2"	8201	5678				10 pçs
2"	12525	0796	0727	10938	5968	10 pçs
2.1/2"	11326	4261	4058	7747	11022	4 pçs
3"		4062	4204	5046	10071	4 pçs
3.1/2"		1088	2415			2 pçs
4"		8513	2416			2 pçs

**ROLDANA P/ TUBO NYLON
C/ 2 ROLAMENTOS – EIXO FURADO**



MED.	CÓD. NU2R FE 1/2"	CÓD. NU2R FE 5/8"	CÓD. NU2R FE 3/4"	CÓD. NU2R FE 7/8"	CÓD. NU2R FE 1"	EMB.
1.1/2"						10 pçs
2"		2417	8889	6204	10074	10 pçs
2.1/2"		5239	4069	5963	10076	4 pçs
3"		4262	4202	5117	9464	4 pçs
3.1/2"		11496	2420	2409	8941	2 pçs
4"		8512	2421	3451	10007	2 pçs

**ROLDANA P/ TUBO NYLON C/ 1
ROLAMENTO C/ PARAFUSO E PORCA**



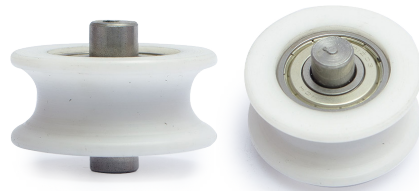
MED.	CÓD. NU2R FE 1/2"	CÓD. NU2R FE 5/8"	CÓD. NU2R FE 3/4"	EMB.
1.1/2"				10 pçs
2"		8327		10 pçs
2.1/2"		8412	12125	4 pçs
3"		12969	12127	4 pçs
3.1/2"				2 pçs
4"				2 pçs

**ROLDANA P/ TUBO NYLON
C/ 1 ROLAMENTO – EIXO MACIÇO**



MED.	CÓD. NU2R FE 1/4"	CÓD. NU2R FE 5/16"	CÓD. NU2R FE 1/2"	CÓD. NU2R FE 5/8"	CÓD. NU2R FE 3/4"	CÓD. NU2R FE 7/8"	CÓD. NU2R FE 1"	EMB.
1"	569							10 pçs
1.1/4"		9969						10 pçs
1.1/2"			0071			4068		10 pçs
2"				0072	0705	1533	0581	10 pçs
2.1/2"				4243	0073	1534		4 pçs
3"				4252	0074			4 pçs
3.1/2"					0075			2 pçs
4"					0076			2 pçs

**ROLDANA P/ TUBO NYLON
C/ 2 ROLAMENTOS – EIXO MACIÇO**



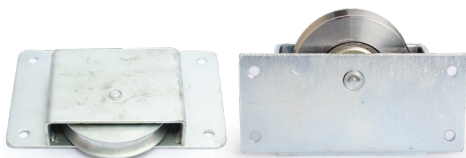
MED.	CÓD. NU2R FE 1/2"	CÓD. NU2R FE 5/8"	CÓD. NU2R FE 3/4"	CÓD. NU2R FE 7/8"	CÓD. NU2R FE 1"	EMB.
1.1/2"	0077			4364		10 pçs
2"		0078	0831	4285	1721	10 pçs
2.1/2"	9544	3103	0079	4121	1082	4 pçs
3"		3446	0080	9254	0582	4 pçs
3.1/2"			0081	4036		2 pçs
4"			0082		8052	2 pçs

**ROLDANA P/ TUBO NYLON C/ 2
ROLAMENTOS C/ PARAFUSO E PORCA**



MED.	CÓD. NU2R FE 1/2"	CÓD. NU2R FE 5/8"	CÓD. NU2R FE 3/4"	EMB.
1.1/2"				10 pçs
2"		8954		10 pçs
2.1/2"			6902	4 pçs
3"			6903	4 pçs
3.1/2"			8580	2 pçs
4"			7106	2 pçs

**ROLDANA C/ CAIXA FECHADA
CANTONEIRA C/ 1 ROLAMENTO**



MED.	CÓD.	EMB.
2.1/2" VR	1381	1 pç
3" VR	1382	1 pç
3.1/2" VR	1383	1 pç
4" VR	1384	1 pç

**ROLDANA C/ CAIXA FECHADA
TUBO C/ 1 ROLAMENTO**



MED.	CÓD. FE 1/2"	CÓD. FE 5/8"	CÓD. FE 3/4"	CÓD. FE 7/8"	EMB.
2.1/2" UR	1393	1401		1389	1 pç
3" UR	1394	1402	2283	1390	1 pç
3.1/2" UR	1395	1403		1391	1 pç
4" UR	1396	1404		1392	1 pç

**ROLDANA C/ CAIXA BÚZIO
CANTONEIRA C/ 1 ROLAMENTO ZINCADA**



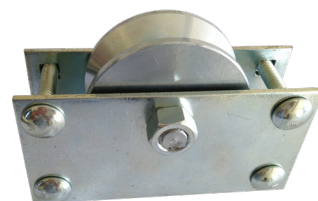
MED.	CÓD.	EMB.
1.1/2" VR	2552	5 pçs
2" VR	1746	4 pçs
2.1/2" VR	1747	3 pçs
3" VR	2551	3 pçs

**ROLDANA C/ CAIXA BÚZIO
TUBO C/ 1 ROLAMENTO ZINCADA**



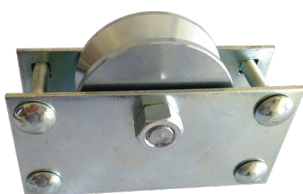
MED.	cód. FE 1/2"	cód. FE 5/8"	cód. FE 3/4"	cód. FE 7/8"	EMB.
1.1/2" UR	3874	4560	4561	4391	5 pçs
2" UR	1748	1752	1839	4392	4 pçs
2.1/2" UR	1749	1753	1840	0519	3 pçs
3" UR	2550	2244	2243	4808	3 pçs

**ROLDANA C/ CAIXA PORTÃO MADEIRA
CANTONEIRA (CRPM) C/ 1 ROLAMENTO ZINCADA**

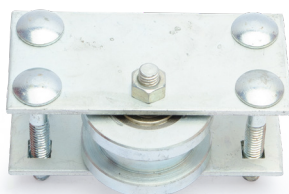


MED.	CÓD.	EMB.
2" VR	1345	1 pç
2.1/2" VR	1346	1 pç
3" VR	1347	1 pç
3.1/2" VR	1348	1 pç
4" VR	1349	1 pç

**ROLDANA C/ CAIXA PORTÃO MADEIRA
TUBO (CRPM) C/ 1 ROLAMENTO ZINCADA**



**ROLDANA C/ CAIXA PORTÃO MADEIRA
QUADRADO (CRPM) C/ 1 ROLAMENTO ZINCADA**



**ROLDANA C/ CAIXA GIRATÓRIA
CANTONEIRA C/ 1 ROLAMENTO**

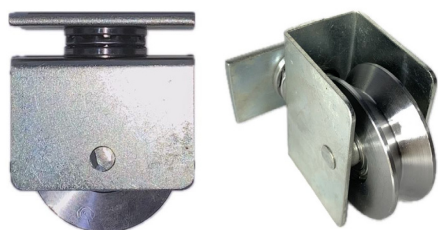


MED.	cód. FE 1/2"	cód. FE 5/8"	cód. FE 3/4"	cód. FE 7/8"	cód. FE 1"	EMB.
2" UR	1436	1805	7801	1355	922	1 pç
2.1/2" UR	1437	1806	776	1356	1736	1 pç
3" UR	1438	1807	2730	1357	3650	1 pç
3.1/2" UR	1397	1808		1358		1 pç
4" UR	1398	1809		1359		1 pç

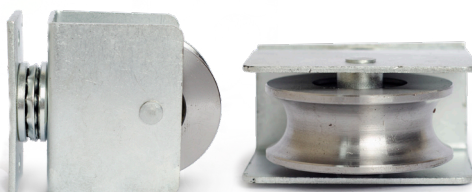
MED.	cód. QR 1/2"	EMB.
2" QR	1350	1 pç
2.1/2" QR	1351	1 pç
3" QR	1352	1 pç
3.1/2" QR	1353	1 pç
4" QR	1354	1 pç

MED.	CÓD.	EMB.
1.1/2" VR		2 pçs
2" VR	7387	2 pçs
2.1/2" VR	7388	2 pçs
3" VR	7389	2 pçs
3.1/2" VR	7390	2 pçs
4" VR	7391	2 pçs

**ROLDANA C/ CAIXA GIRATÓRIA
CANTONEIRA C/ 2 ROLAMENTOS**



**ROLDANA C/ CAIXA GIRATÓRIA
TUBO C/ 1 ROLAMENTO**



**ROLDANA C/ CAIXA GIRATÓRIA
TUBO C/ 2 ROLAMENTOS**

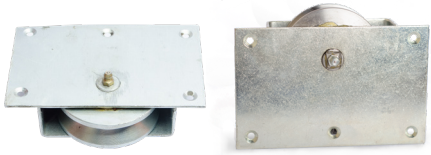


MED.	CÓD.	EMB.
1.1/2" V2R		2 pçs
2" V2R		2 pçs
2.1/2" V2R	10989	2 pçs
3" V2R		2 pçs
3.1/2" V2R		2 pçs
4" V2R	8869	2 pçs

MED.	cód. FE 1/2"	cód. FE 5/8"	cód. FE 3/4"	cód. FE 7/8"	EMB.
1.1/2" UR	7376				2 pçs
2" UR		7377	7382	8149	2 pçs
2.1/2" UR		7378	7383	10432	2 pçs
3" UR		7379	7384		2 pçs
3.1/2" UR		7380	7385		2 pçs
4" UR		7381	7386		2 pçs

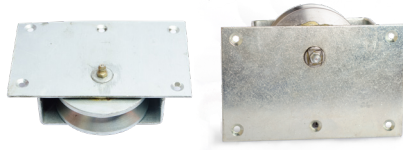
MED.	cód. FE 1/2"	cód. FE 5/8"	cód. FE 3/4"	cód. FE 7/8"	EMB.
1.1/2" U2R					2 pçs
2" U2R		7842		8433	2 pçs
2.1/2" U2R		8235	7525	7609	2 pçs
3" U2R		8236	7527	7610	2 pçs
3.1/2" U2R	9537	7662	7653		2 pçs
4" U2R		7899	8828		2 pçs

**ROLDANA C/ CAIXA PPA
CANTONEIRA C/ 1 OU 2 ROLAMENTOS**



MED.	CÓD.	EMB.
2.1/2" VR	037	1 pç
3" VR	038	1 pç
2.1/2" V2R	039	1 pç
3" V2R	040	1 pç
3.1/2" V2R	041	1 pç
4" V2R	042	1 pç
5" V2R	043	1 pç

**ROLDANA C/ CAIXA PPA
TUBO C/ 1 OU 2 ROLAMENTOS**



MED.	cód. FE 3/4"	cód. FE 1"	EMB.
2.1/2" UR	194		1 pç
3" UR	195		1 pç
2.1/2" U2R	196		1 pç
3" U2R	197		1 pç
3.1/2" U2R	198		1 pç
4" U2R	199		1 pç
5" U2R		200	1 pç

**ROLDANA C/CAIXA TRUCK CANTONEIRA
C/ 1 E 2 ROLAMENTOS – EIXO MACIÇO**



MED.	cód. VR	EMB.	cód. V2R	EMB.
2.1/2"	12435	1 pç		1 pç
3"		1 pç		1 pç
3.1/2"		1 pç		1 pç
4"		1 pç		1 pç

**ROLDANA C/CAIXA TRUCK TUBO C/1 E 2
ROLAMENTOS - EIXO MACIÇO**



MED.	cód. UR FE 5/8"	cód. UR FE 3/4"	cód. U2R FE 5/8"	cód. U2R FE 3/4"	EMB.
2.1/2"	12661	12650	12660	12559	1 pç
3"	12663	12659	12662	12685	1 pç
3.1/2"					1 pç
4"					1 pç

**ROLDANA C/ CAIXA SUPORTE CANTONEIRA
C/ 1 ROLAMENTO ZINCADA**



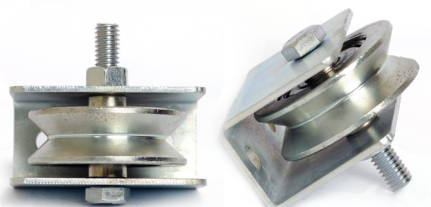
MED.	CÓD.	EMB.
1.1/2" SVR	1259	5 pçs
2" SVR	1260	4 pçs
2.1/2" SVR	1261	3 pçs
3" SVR	1262	3 pçs
3.1/2" SVR	1263	2 pçs
4" SVR	1264	2 pçs

**ROLDANA C/ CAIXA SUPORTE
TUBO C/ 1 ROLAMENTO ZINCADA**



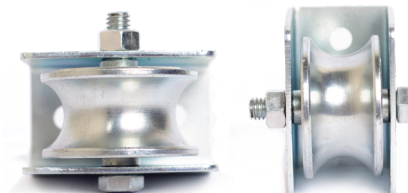
MED.	cód. SUR FE 1/2"	cód. SUR FE 5/8"	cód. SUR FE 3/4"	cód. SUR FE 7/8"	cód. SUR FE 1"	EMB.
1.1/2"	1265	5866		0720		5 pçs
2"	1266	1800	3379	1616	1795	4 pçs
2.1/2"	1267	1801	3378	1617	1796	3 pçs
3"	1268	1802	3576	1618	1797	3 pçs
3.1/2"	1269	1803	724	1619	1798	2 pçs
4"	1270	1804	4067	1620	1799	2 pçs

**ROLDANA CAIXA SUPORTE C/ PARAFUSO E PORCA
CANTONEIRA C/ 1 ROLAMENTO ZINCADA**



MED.	CÓD.	EMB.
1.1/2" SVR	2543	5 pçs
2" SVR	1771	4 pçs
2.1/2" SVR	1772	3 pçs
3" SVR	1773	3 pçs
3.1/2" SVR	1774	2 pçs
4" SVR	1775	2 pçs

**ROLDANA CAIXA SUPORTE
C/ PARAFUSO E PORCA - TUBO ZINCADA**



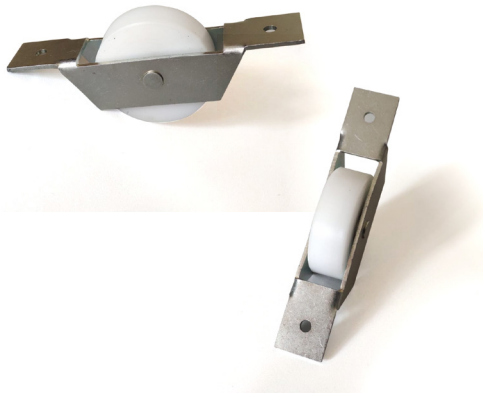
MED.	cód. FE 1/2"	cód. FE 3/4"	cód. FE 7/8"	cód. FE 1"	EMB.
1.1/2" SUR		476			5 pçs
2" SUR	1785	2277	1776	2799	4 pçs
2.1/2" SUR	1786	2278	1777	2800	3 pçs
3" SUR	1787	2279	1778	2801	3 pçs
3.1/2" SUR	1788		1779		2 pçs
4" SUR	1789	2677	1780		2 pçs

**ROLDANA C/ CAIXA BÚZIO NYLON
CANTONEIRA C/ 1 ROLAMENTO**



MED.	CÓD.	EMB.
1.1/2" NVR	2836	5 pçs
2" NVR	1756	4 pçs
2.1/2" NVR	1757	3 pçs
3" NVR	2269	3 pçs

ROLDANA C/ CAIXA BÚZIO NYLON LISA



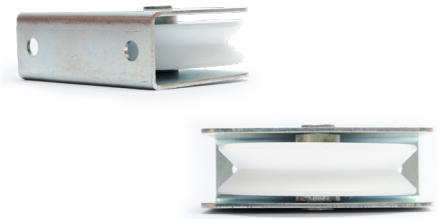
MED.	CÓD.	EMB.
2" NLR	1760	4 pçs

ROLDANA C/ CAIXA BÚZIO NYLON TUBO C/ 1 ROLAMENTO



MED.	cód. FE 1/2"	cód. FE 5/8"	cód. FE 3/4"	cód. FE 7/8"	EMB.
1.1/2" NUR	7437				5 pçs
2" NUR	1765	1762	2272	4810	4 pçs
2.1/2" NUR	1766	1763	2273	4811	3 pçs
3" NUR	2549	2275	2274	4809	3 pçs

ROLDANA C/ CAIXA SUPORTE NYLON CANTONEIRA C/ 1 ROLAMENTO



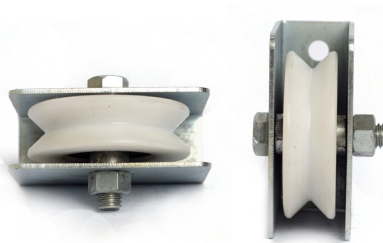
MED.	CÓD.	EMB.
1.1/2" SNVR	1480	5 pçs
2" SNVR	1481	4 pçs
2.1/2" SNVR	1482	3 pçs
3" SNVR	1483	3 pçs
3.1/2" SNVR	1484	2 pçs
4" SNVR	1485	2 pçs

ROLDANA C/ CAIXA SUPORTE NYLON TUBO C/ 1 ROLAMENTO



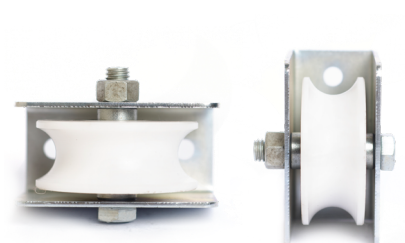
MED.	cód. SNUR FE 1/2"	cód. SNUR FE 5/8"	cód. SNUR FE 3/4"	cód. SNUR FE 7/8"	cód. SNUR FE 1"	EMB.
1.1/2"	1492	2300				5 pçs
2"	1493	2301		2247	2251	4 pçs
2.1/2"	1494	2302	10252	2248	2252	3 pçs
3"	1495	2303	12387	2236	2253	3 pçs
3.1/2"	1496	2304		2249	2254	2 pçs
4"	1497	2305		2250	2255	2 pçs

ROLDANA CAIXA SUPORTE C/ PARAF. E PORCA CANTONEIRA NYLON C/ 1 ROLAMENTO



MED.	cód. FE 1/2"	EMB.
1.1/2" SNVR		5 pçs
2" SNVR	1810	4 pçs
2.1/2" SNVR	1811	3 pçs
3" SNVR	1812	3 pçs
3.1/2" SNVR	1813	2 pçs
4" SNVR	1814	2 pçs

ROLDANA CAIXA SUPORTE C/ PARAFUSO E PORCA - TUBO NYLON



MED.	cód. FE 1/2"	cód. FE 3/4"	cód. FE 7/8"	cód. FE 1"	EMB.
1.1/2" SNUR					5 pçs
2" SNUR	1815		1825	2256	4 pçs
2.1/2" SNUR	1816		1826	2257	3 pçs
3" SNUR	1817		1827	2258	3 pçs
3.1/2" SNUR	1818		1828	2259	2 pçs
4" SNUR	1819		1829	2260	2 pçs

ROLETE DE NYLON



MED.	CÓD.	EMB.
Ø25/10x40 C/ REB.	10613	10 pçs
Ø30/10x20 C/ REB.	10240	10 pçs
Ø30/10x40 C/ REB.	3133	10 pçs
Ø30/10x50 C/ REB.	11767	10 pçs

ROLETE DE NYLON C/ REBAIXO PARAFUSO E PORCA ZINCADO



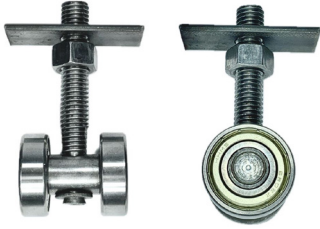
MED.	CÓD.	EMB.
Ø25 / 8X50	11534	10 pçs
Ø30 / 10X40	8793	10 pçs

FITA LATERAL SAE1070



MED.	CÓD.	EMB.
0,5x25mm	2308	Rolo de aprox. 30 kg cada

STANLEY DUPLO



MED.	CÓD.	EMB.
Ø32	12534	5 pçs
Ø35	9665	5 pçs
Ø40	7436	5 pçs

STANLEY DUPLO SKP



MED.	CÓD.	EMB.
Ø7/8"	1024	10 pçs

STANLEY QUÁDRUPLO



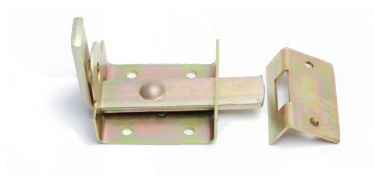
MED.	CÓD.	EMB.
Ø32	11004	5 pçs
Ø35	8111	5 pçs
Ø40	12991	5 pçs

STANLEY QUÁDRUPLO SKSP



MED.	CÓD.	EMB.
Ø7/8"	691	10 pçs

TRINCO CHATO



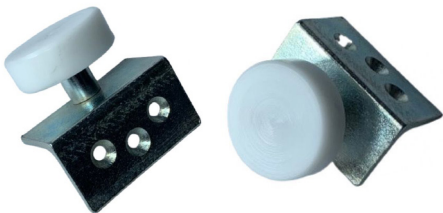
MED.	CÓD.	EMB.
2"	6926	10 pçs
3"	6927	10 pçs
4"	7537	10 pçs

SUPOORTE P/ TRILHO



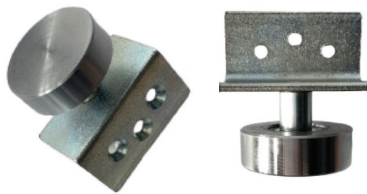
MED.	CÓD.	EMB.
Ø40	157	5 pçs
Ø42	158	5 pçs
Ø44	159	5 pçs

SUPOORTE P/ TRILHO C/ ROLAMENTO NYLON



MED.	CÓD.	EMB.
Ø42	6446	5 pçs
Ø44	4372	5 pçs

SUPOORTE P/ TRILHO C/ ROLAMENTO AÇO



MED.	CÓD.	EMB.
Ø44	2692	5 pçs

CANOPLA



MED.	CÓD.	EMB.
1.1/4"	3980	10 Pçs
1.1/2"	3981	10 Pçs
2"	3982	10 Pçs

COTOVELO



MED.	CÓD.	EMB.
1"	3964	10 Pçs
1.1/4"	3965	10 Pçs
1.1/2"	3966	10 Pçs
2"	3967	10 Pçs

CURVA 45° CH.16



MED.	CÓD.	EMB.
1"	11541	10 Pçs
1.1/4"	9373	10 Pçs
1.1/2"	9372	10 Pçs
2"	11173	10 Pçs

CURVA 90° CH.16



MED.	CÓD.	EMB.
1"	3968	10 Pçs
1.1/4"	3969	10 Pçs
1.1/2"	3970	10 Pçs
2"	3971	10 Pçs

CURVA 180° CH.16



MED.	CÓD.	EMB.
1"	3972	10 Pçs
1.1/4"	3973	10 Pçs
1.1/2"	3974	10 Pçs
2"	3975	10 Pçs

PONTA DE CORRIMÃO



MED.	CÓD.	EMB.
1"	3976	10 Pçs
1.1/4"	3977	10 Pçs
1.1/2"	3978	10 Pçs
2"	3979	10 Pçs

SUPORTE REDONDO



MED.	CÓD.	EMB.
3/8"	8719	10 Pçs
1/2"	3959	10 Pçs

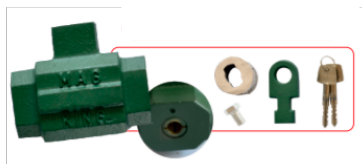
SUPORTE RETANGULAR



MED.	CÓD.	EMB.
3/8"	8720	10 Pçs
1/2"	3960	10 Pçs

CADEADOS

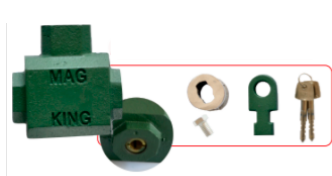
CADEADO KING



CÓDIGO.

7833

CADEADO MINI KING



CÓDIGO.

7834

TRAVA LATERAL



CÓDIGO.

7829

TABELA DE CONVERSÃO POLEGADAS / MILÍMETROS - BARRA REDONDA - AÇO

BITOLAS

PESO NOMINAL

pol	mm	kg/m
1/4"	6,35	0,25
5/16"	7,94	0,39
3/8"	9,53	0,56
1/2"	12,70	0,99
9/16"	14,29	1,26
5/8"	15,88	1,56
11/16"	17,46	1,88
3/4"	19,05	2,24
13/16"	20,64	2,63
7/8"	22,23	3,05
15/16"	23,81	3,49
1"	25,40	3,98
1.1/16"	26,99	4,49
1.1/8"	28,58	5,04
1.3/16"	30,16	5,60
1.1/4"	31,75	6,21

BITOLAS

PESO NOMINAL

pol	mm	kg/m
1.5/16"	33,34	6,85
1.3/8"	34,93	7,52
1.7/16"	36,51	8,22
1.1/2"	38,10	8,95
1.9/16"	39,69	9,71
1.5/8"	41,28	10,50
1.11/16"	42,86	11,32
1.3/4"	44,45	12,18
1.13/16"	46,40	13,06
1.7/8"	47,63	13,98
2"	50,80	15,91
2.1/16"	52,39	16,92
2.1/8"	53,98	17,96
2.1/4"	57,15	20,14
2.5/16"	58,74	21,27
2.3/8"	60,33	22,43

BITOLAS

PESO NOMINAL

pol	mm	kg/m
2.7/16"	61,91	23,63
2.1/2"	63,50	24,86
2.9/16"	65,08	26,11
2.5/8"	66,68	27,40
2.3/4"	69,85	30,08
2.13/16"	71,44	31,45
2.7/8"	73,03	32,87
3"	76,20	35,79
3.1/16"	77,79	37,30
3.1/8"	79,38	38,84
3.1/4"	82,55	42,01
3.7/16"	87,31	46,99
3.1/2"	88,90	48,73
3.3/4"	95,35	55,94
4"	101,60	63,64
4.1/16"	103,19	65,65



USINAGEM SOB DEMANDA

Produtos fabricados de acordo com sua necessidade

www.tornomec.com.br




TORNOMEC
ACESSÓRIOS PARA FERRAGISTA E USINAGEM

 Tornomec.com.br

 [Tornomec](#)

 (31) 3385-6673

 Av. Senador Levindo Coelho, 1698
Dist. Ind. Jatobá ■ Belo Horizonte / MG